



June 2024 // Issue 8

MP Connect goes live

MP Connect will go live later this year - Have you subscribed?



If not, register with MP Connect and download the app.

If you have not received the invite email to register your MP Connect account, then you will need to log on to

<https://www.mpqc-nexus.co.uk/connect>

Once registered you will be able to log in to your MP Connect account where you will be able to access details of your MP Connect card and its expiry date. You will also need to complete the DVLA declaration this allows MPQC to check your drivers licence.

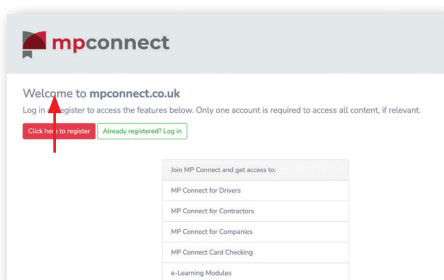
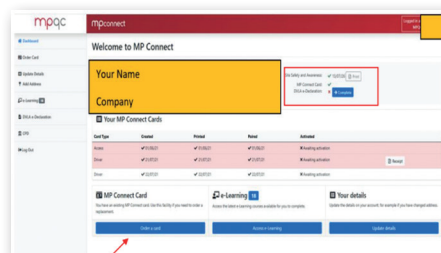
Please note, the option to order a card is there for Drivers who have to buy one for themselves; if your company supply you with an MP connect card, they will be able to order it directly with MPQC and therefore you will not need to do anything.

If you click on the order card button you will be asked for your debit /credit card details and will be charged £30 for a new card or £10 for a replacement.

To download the app, you will need to go to either Play store, or Apple apps, type in MP Connect, then click on the red MP Connect app or follow the links below:

Android: <https://play.google.com/store/apps/details?id=com.mpqc.mpconnect2>

Apple: <https://apps.apple.com/mt/app/mp-connect/id1598895631>



Current rebranding position

As you may have seen on your travels, every day we have more and more vehicles with Heidelberg branding.

	Vehicles	Green Sheets	%	HM Livery	%
North	63	62	98.4%	59	93.7%
Central	19	19	100%	19	100%
South	202	149	73.8%	202	100%
Total	284	230	81%	280	98.6%

10/6/24. A Trader account been approved emailed to ask for appli- Charity work?

We were approached by the Sikh Temple in Bristol due to their car park deteriorating over time and making it difficult for the congregation to park on site.

The Sikh temple is a non-profit charity that services all of the Sikh community from Bristol and the south west. They are open to all communities, religions and beliefs.

This work would not have gone ahead without the support of our Aggregates, Asphalt and contracting division who donated their time and resources to make this happen. Material used was our Tuffdrive 10 surf PMB HH.

We have since received a letter of gratitude from the Sikh Temple expressing how our services have lifted spirits amongst the congregation as the hazards have been removed and the more

vulnerable members can now access the building without trouble.



Updates

Near Hits

A QR code has been produce and will be rolled out shortly, for driver risk assessment and near-hit reporting. Accessible via a smart phone Android and Apple.

Track IT

Track IT is currently in the development stage, pilot due to be rolled out in July in the South

Driver Handbook – MPA driver hand book can be found here:



Selling your vehicle? Advertise vehicle on our Heidelberg website

We would encourage any franchise vehicles that you are looking to sell to be added to the portfolio, thus enabling us to keep the vehicle within the fleet and save on livery changes.

If you would like any vehicles adding, please contact your local DRM, along with a maximum of four photos.



Please keep checking back for new additions!



Incidents involving tipplers

The data collected from our Near Hit system highlights that incidents with collision potential remain the most frequently reported category at 56.3% of all incidents raised. Specifically:

Heavy Mobile Equipment (HME)

Incidents (25%): Involving vehicles like Dumpers and Front-End Loaders (FELs).

Light Vehicle Incidents (11%):

Including cars and vans.

Pedestrian Risk (8%): Incidents directly endangering pedestrians.

How to reduce risk:

- **Onsite Induction:** Ensure everyone is familiar with safety protocols and site layout.
- **Traffic Rules Adherence:** Follow site traffic rules.
- **Stay in Designated Pedestrian Zones:** When outside vehicles, remain within designated areas.
- **Wear the correct PPE:** Be safe, be seen.
- **Effective Communication:** Interact with HME operators using eye contact, thumbs up, and radio communication.

